

Session 11



May S. Flores, Ed.D.

Professor, School of Education
University of the Assumption
PHILIPPINES

C-EDUC1 (3 units)

*Child and Adolescent Learners and
Learning Principles*

Fall Semester 2023

C-EDUC1

Child and Adolescent Learners and Learning Principles

Fall Semester 2023

Learning Theories: Edward Thorndike's Theory of Connectionism

May S. Flores, Ed.D.

Professor, School of Education

University of the Assumption

PHILIPPINES



Connectionism Theory

Session OBJECTIVES:

- ✓ Discuss the connectionism theory (S-R) in various perspectives and its implications to facilitating learning;
- ✓ Address the connection of learning to classroom behavior and management.

Connectionism Theory

Session OBJECTIVES:

- ✓ Determine classroom scenarios, community issues and / or events that concerns the different laws of learning.
- ✓ Elaborate the functions of multiple responses in in relation to teaching and learning .

Session 11

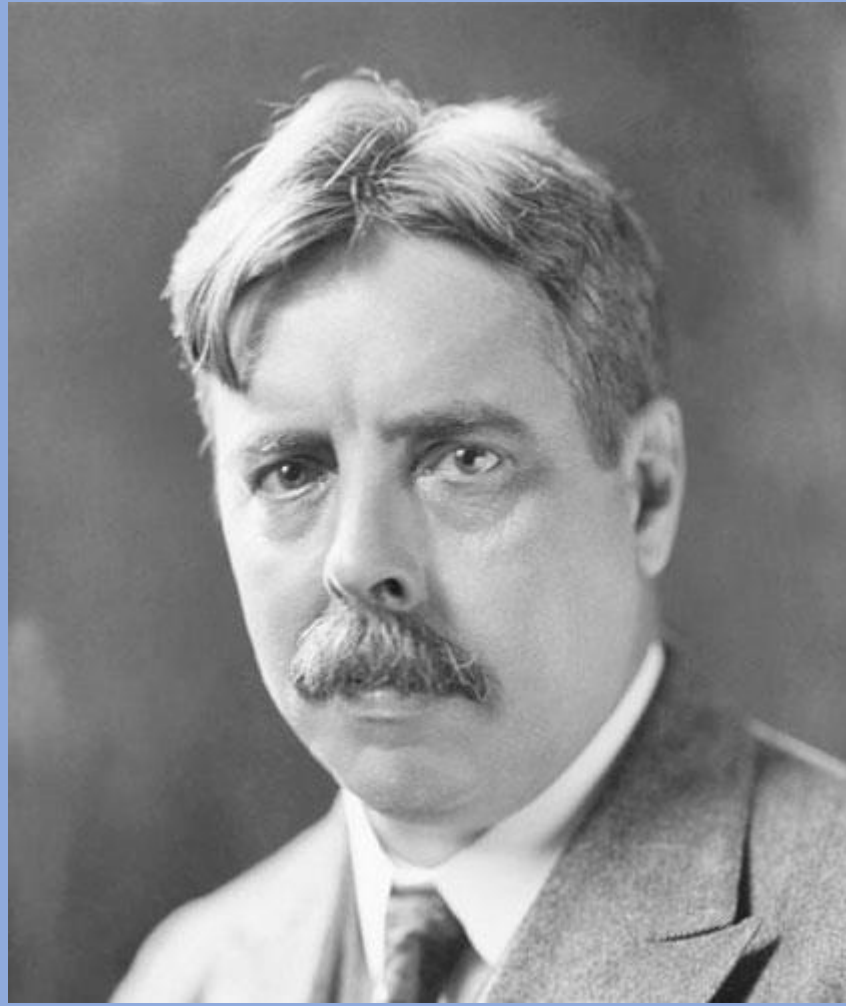


Image 1. Introduction to Thorndike's Theory.
(Source: Main, P.,2023 (Online))

The Connectionism Theory

Edward Thorndike

Edward Thorndike

- ❑ An American psychologist to develop behavioral psychology.
- ❑ He put emphasis on the S-R connection and on the significance of reinforcement-punishment in learning.

Edward Thorndike

- ❑ His focus of study is on the child behavior and shifted to studying animals.
- ❑ Thorndike is well-known in his theory called, “The Laws of Learning”.

**Theory
of
Behaviorism**

**Classical
Conditioning**

**Operant
Conditioning**

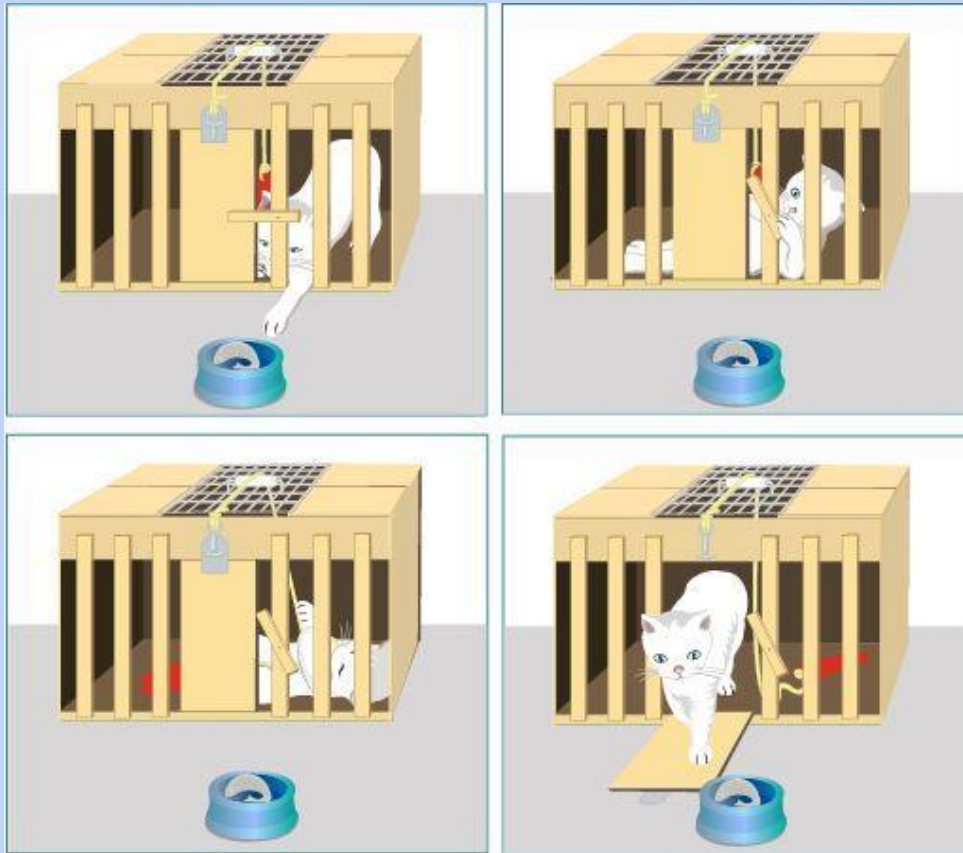
Connectionism

Trial and Error in Learning



- Experiments on Cat
- Law of Learning
 - *Readiness*
 - *Exercise*
 - *Effect*

Trial and Error



**Desirable
result**

Connectionism

Several attempts

Fundamental type of learning

- **The forming of association.**
- **Sensory experience.**
- **Neutral impulse.**

Three (3) Law of Learning

- ✓ **Law of Readiness**
- ✓ **Law of Exercise**
- ✓ **Law of Effect**

Law of Readiness

➤ Preparation of action

Conditions:

1. Preparedness
2. Inactivity
3. Forced / Coerced



*Image 1. How Sprinting Helps you Improve your Health?
(Source: Kovvali, K. 2017: Online)*

The law of readiness states that if a person is prepared to act on a particular task, the result is rewarding, otherwise it will not give a satisfying result.

Be physically, emotionally, mentally, and psychology prepared.

Law of Exercise

Law of use and disuse



Image 2. The Place to Challenge Ballet's Gender Stereotypes? In Daily Class
(Source: Mainwaring, M. 2019: Online)

Repetitions of activities allow knowledge and skills to be learned

Lack of practice weakens one's ability in memory and skills

LAW OF USE

When there is an equal connection strength in an observed situation and a response (S-R), the law of use is not maximized.

LAW OF DISUSED

An established modification of a connection which is not related to the S-R in a period of time weakens the connection.

The more frequently a stimulus and response are associated with each other, the more likely the particular response will follow the stimulus.

Law of Effect

- A repeated behavior that resulted from a pleasing result.

learning curve

LAW OF EFFECT

- A response that is followed by a satisfying result, the S-R connection strengthen.
- If a response is unsatisfying, the S-R connection weakened

Secondary Laws

Law of Multiple Response

The Law of Set or Attitude

Prepotency of Elements

Law of Associative Shifting

Law of Response by Analogy

Law of Multiple Response

- A problem is solved with naturally learned behavior.
- Different responses considered as answers to problems.

The Law of Set or Attitude

- The response of a person in a given stimulus is dependent on the attitude towards the situation.
- Learning is conditioned or guided by the attitude of the person that determines the actions or behavior.
- Learning is guaranteed if one is set to learn more or to excel in a particular undertaking.

Prepotency of Elements (Perspective)

- Responses on the stimuli depends on the insight and capability of the person.
- The person reacts selectively to the important or essential features of the situation and disregard the other features that may be irrelevant or non-essential.

Law of Associative Shifting

Uses previous experiences to connect in response to a current situation.

Law of Response by Analogy

The learner's response is shifted from one (associative) stimulus to another.

The Other Laws of Learning

The Law of Supremacy

Preparation is a significant factor in Learning which yield a satisfying result.

In conclusion

- ✓ Preparation is a significant factor in learning which yield a satisfying result.
- ✓ Learning should be high in intensity and applicable to current situation

...conclusion

- ✓ Learning can be progressive (easy-difficult)
- ✓ Trial and error in teaching to improve the delivery of lessons.
- ✓ Rewards and punishments affects the learning.

References:

Acero, V., Javier, E., Castro, H. (2004). *Human Growth Development and Learning*. Rex Bookstore Inc., Manila, Philippines

Bergin, C. & Bergin, D. (2012). *Child and adolescent development in your classroom*. USA: Elm Street Publishing

Chozas, M. (2011) *General psychology (Modular approach, revised edition)*. Quezon City, Philippines: St. Andrew.

Kovvali, K. (2017). *How Sprinting Helps You Improve Your Health?* [Online Image] [Accessed November 3, 2023] <https://blog.playo.co/sprinting-helps-improve-health/>

References:

Mainwaring, M. (2019). *The Place to Challenge Ballet's Gender Stereotypes? In Daily Class*
[Online Image] [Accessed November 3, 2023]
<https://www.nytimes.com/2019/01/25/arts/the-place-to-challenge-ballets-gender-stereotypes-in-daily-class.html>

Main, P. (2023). Introduction to Thorndike's Theory. [Online Image] [Accessed November 11, 2023] <https://www.structural-learning.com/post/thorndikes-theory>

Merin, J., Olvido, M., Cardillo, M., Abela, R., Manaig, M. (2019). *Child and Adolescent Learners and Learning Principles*. Mutya Publishing House, Inc., Malabon City, Philippines.