

# **Course: Software Configuration Management**

## **Week 4: Organizational Context and Planning**

**Lecturer: Yimer Amedie (MSc.)**

Addis Ababa Science and Technology University, Ethiopia

October, 2025

# Contents



## SOFTWARE CONFIGURATION MANAGEMENT

- Introduction
- Organizational Context
- SCM Constraints
- High-Level SCM Planning
- Governance and Compliance in SCM
- Summary

Figure 1: Concepts of SCM  
(Source: OpenAI, 2025)

# Learning Outcomes

After completing this lesson, you will be able to:

- Explain how organizational structure, culture, and management influence SCM implementation.
- Identify common constraints that affect SCM processes
- Describe the purpose and components of high-level SCM planning
- Discuss the role of governance in SCM
- Evaluate the importance of compliance in SCM environments

# Introduction

- Like other management, CM needs **people** to perform the various activities and to produce results (Leon, 2015)
- Among the activities that have be performed for the SCM system to function properly are:
  - Configuration identification
  - Change management, disposition and implementation
  - Configuration control
  - Status accounting, CA, etc.

# Organizational Context

- Context
  - Environment where SCM is practiced.
- Includes
  - Culture, structure, and leadership
- Defines how decisions are made
- Affects resource allocation and priorities
- Shapes SCM effectiveness and adoption



# Organizational Context ... (2)

- **Cultural Influences on SCM**
  - Organizational culture
    - → Shared values and beliefs
  - Determines acceptance of rules and procedures
  - Impacts willingness to adopt SCM tools
  - Resistance or support depends on culture
  - Strong quality culture
    - → Strong SCM practices

# Where SCM fits into the organizational structure?

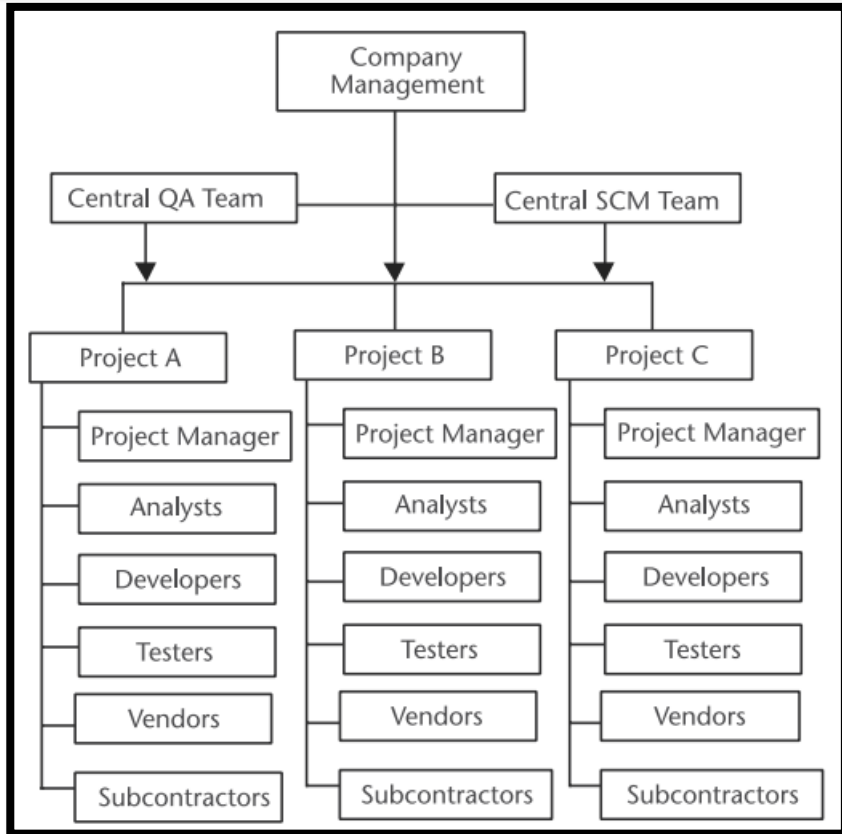


Figure 2: SCM in organizational structure  
(Source: OpenAI, 2025)

# Organizational Structure and SCM

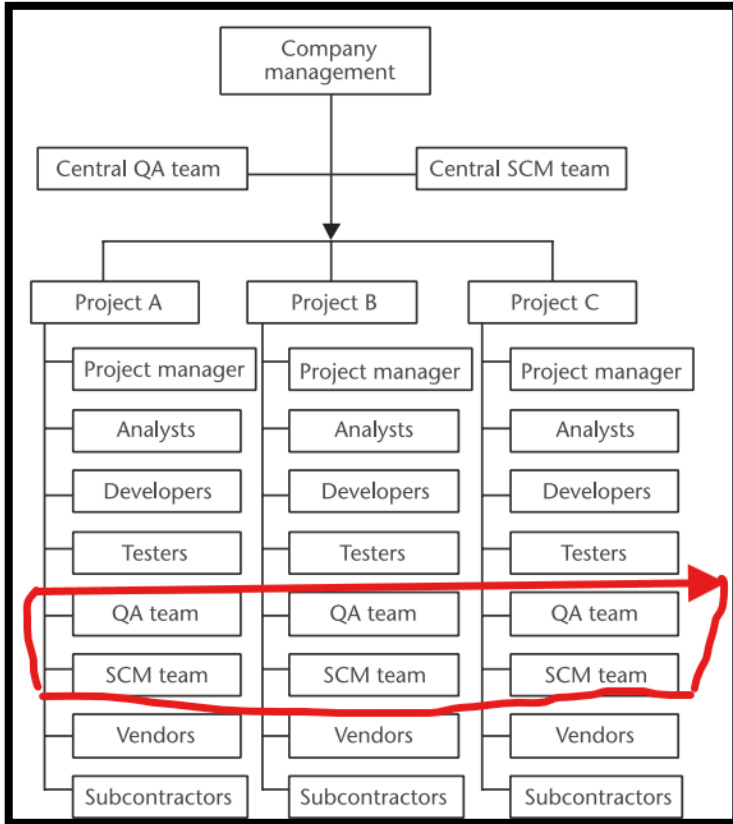
- Structure defines reporting lines and authority
- **Centralized Vs Decentralized decision-making**
  - Strong hierarchy → **Centralized**
    - Stricter SCM enforcement
  - Flexible structure → **Decentralized**
    - Quicker but riskier SCM roles depend on organizational design

# Organizational Structure and SCM ... (2)



**Figure 3:** Organizational structure in which a central SCM team deals with the different Projects. (Source: Leon, 2015)

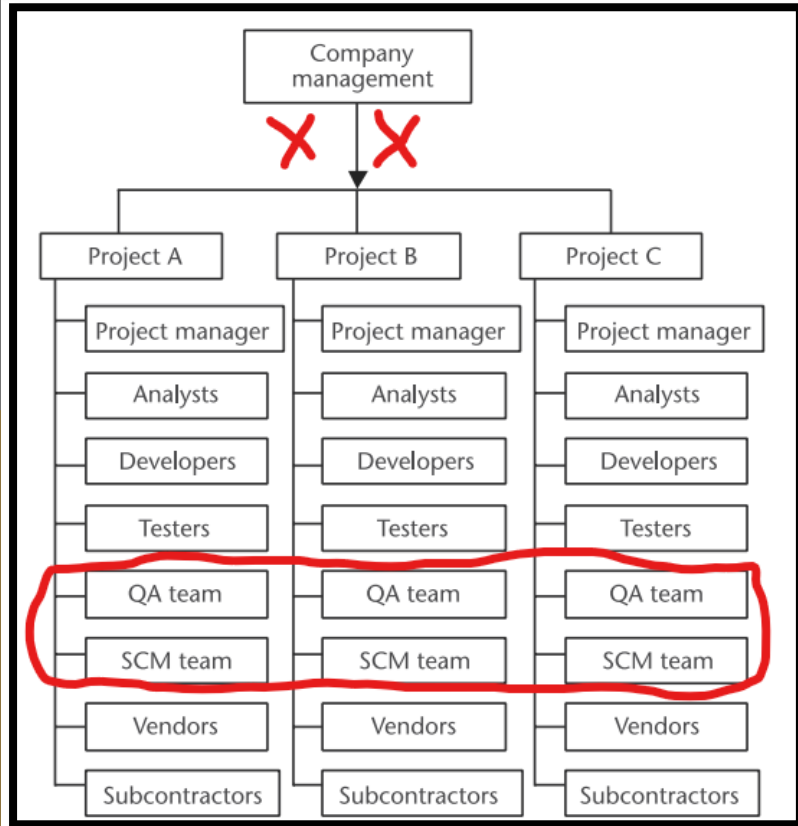
# Organizational Structure and SCM ... (3)



**Figure 4:** Organizational structure when a central SCM team and individual SCM teams are used.

(Source: Leon, 2015)

# Organizational Structure and SCM ... (4)



**Figure 5:** Organizational structure in which there are independent SCM teams for each project.

(Source: Leon, 2015)

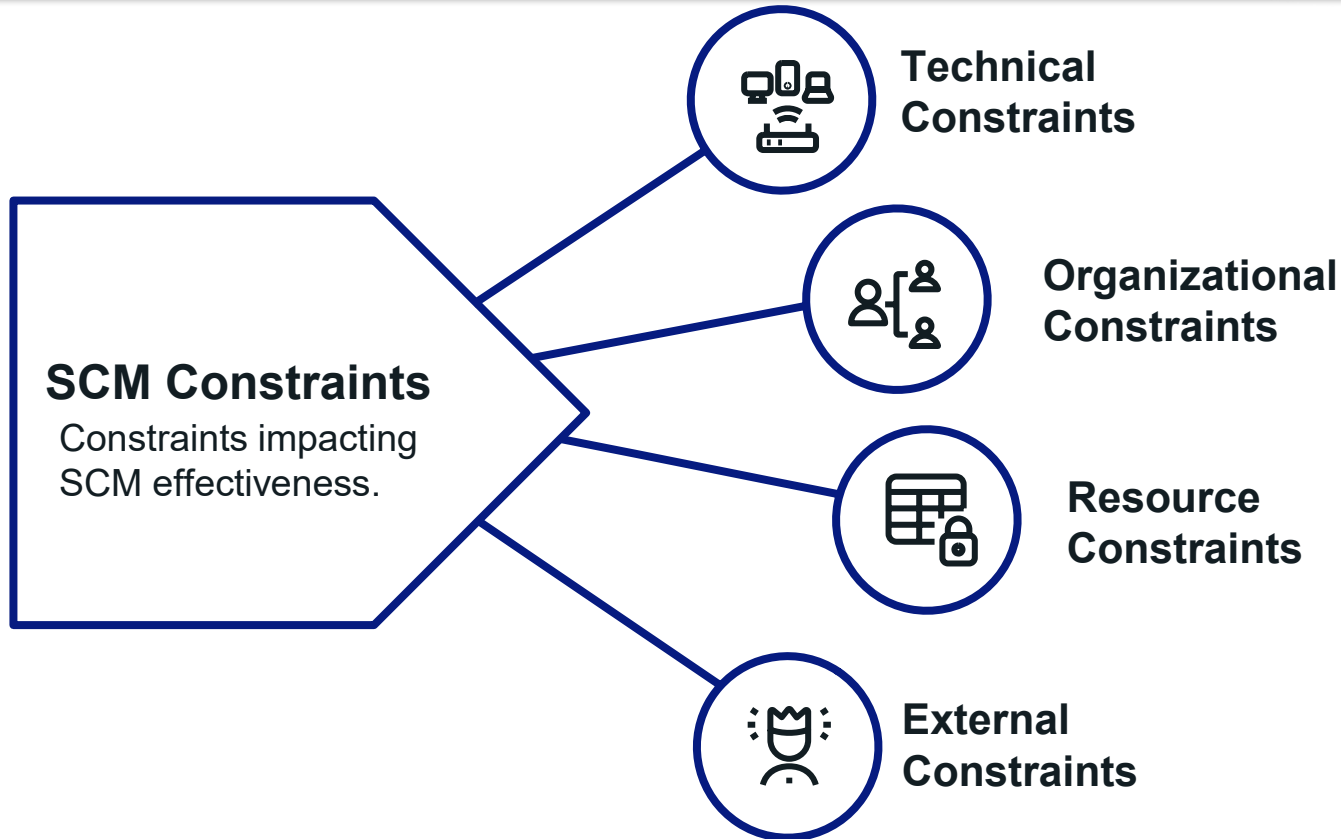
# Leadership and SCM Commitment

- Leadership sets tone for SCM importance
- Managers allocate resources for SCM
- Strong leadership
  - Compliance and adoption
- Weak leadership
  - Neglect of SCM activities
- Commitment at top ensures long-term success

# SCM Constraints

- Constraints
  - Limits on SCM effectiveness
- Can be internal or external to the organization
- Often unavoidable, must be managed
- Define what is realistic in SCM planning

# SCM Constraints ... (2)



# SCM Constraints ... (3)

- **Technical/Technology Constraints**
  - Dependence on legacy systems
  - Incompatibility between tools
  - Integration challenges with other software
  - High cost of advanced tools
  - Security limitations in some environments

# SCM Constraints ... (4)

- **Organizational/Process Constraints**
  - Overly rigid standards slow SCM activities
  - Bureaucracy creates unnecessary steps
  - Resistance to process change by staff
  - Inconsistent process adoption across teams
  - Delays in approvals and reviews

# SCM Constraints ... (5)

- **Resource Constraints**
  - Limited budget for tools and training
  - Shortage of skilled personnel
  - Competing project priorities
  - Insufficient time for documentation
  - Risk of overloading existing staff

# SCM Constraints ... (6)

- **External Constraints**

- Government regulations and standards
- Customer contract requirements
- Industry-specific compliance needs
- Market-driven release deadlines
- Legal or certification restrictions

# SCM Constraints ... (7)

- **Balancing Constraints**

- Constraints cannot be eliminated completely
- They guide realistic SCM design
- Balance control, cost, and speed
- Adapt processes to fit context
- Goal:
  - optimize SCM, not perfect it

# SCM Constraints ... (8)

## Pros and Cons

### Pros

- Realistic design
- Balanced approach
- Contextual adaptation
- Optimization focus

### Cons

- Incomplete elimination
- Suboptimal performance
- Inflexibility

# Overview on SCM Plan

- Planning
  - Strategic direction for SCM
- Defines scope and objectives
- Aligns with organizational goals
- Guides resource allocation
- Provides structure for consistent practices

# Purpose of High-level SCM Planning

- Provides big-picture direction for SCM
- Ensures all teams follow common standards
- Supports communication across departments
- Anticipates challenges and risks
- Establishes foundation for detailed planning

# Elements of High-level Planning

- Define what SCM will cover (scope)
- Identify stakeholders and roles
- Establish major milestones or phases
- Allocate initial resources
- Connect SCM goals to project goals

# Strategic Alignment with Organization

- SCM must support business objectives
- Adapt practices to organizational strategy
- Agile firms → lightweight SCM
- Regulated industries → formal SCM
- Alignment improves acceptance and success

# SCM Governance

- Governance
  - Oversight and control framework
- Defines accountability for SCM activities
- Ensures compliance with policies and standards
- Provides authority for decision-making
- Links SCM with organizational leadership

# Principles of SCM Governance



## Transparency

Ensures visibility of all SCM activities



## Accountability

Clearly defines Roles and responsibilities



## Consistency

Maintains uniform application of rules



## Compliance

Adheres to internal & external standards



## Continuous Improvement

Adapts and evolves over time

# Governance Structures

- Defined roles: managers, auditors, engineers
- Configuration Control Board (CCB) as key body
- Review and approval processes
- Escalation paths for decision-making
- Governance integrated with project management

# Roles of CCB

- Configuration Control Board (CCB) roles are:
  - Reviews proposed changes to baselines
  - Approves, rejects, or defers changes
  - Ensures changes align with goals and policies
  - Balances technical, cost, and schedule factors
  - Provides formal record of decisions

# Governance and Decision-Making

- Governance defines who can decide
- Prevents unauthorized changes
- Promotes fair and balanced choices
- Uses documented approval processes
- Supports accountability and traceability

# Benefits of Strong Governance

- Ensures consistency across projects
- Builds trust with stakeholders
- Improves compliance with standards
- Reduces risk of errors or conflicts
- Strengthens long-term SCM discipline

# Challenges in Governance

- Risk of excessive bureaucracy
- Possible delays in approvals
- Resistance from staff and teams
- Difficulty balancing flexibility and control
- Requires ongoing leadership support

# Overview of SCM Compliance

- Compliance
  - Following established rules
- Covers laws, standards, and internal policies
- Ensures reliability and accountability
- Protects against legal or contractual risks
- Supports certification and audits

# Types of Compliance in SCM



## Regulatory Compliance

Adherence to legal and industry rules



## Contractual Compliance

Fulfillment of customer agreements



## Standards Compliance

Alignment with ISO, IEEE, CMMI standards



## Internal Compliance

Following company policies and processes



## Ethical Compliance

Upholding responsibility and transparency

# Compliance and Audits

- Audits check if SCM rules are followed
- Internal and external audits possible
- Focus on processes, records, and traceability
- Findings may lead to improvements or penalties
- Audits prove compliance to stakeholders

# Benefits of Compliance in SCM

- Ensures product quality and safety
- Builds customer and regulator trust
- Reduces legal and financial risks
- Improves organizational reputation
- Supports continuous process improvement

# Challenges in Achieving Compliance

- Complex and changing regulations
- High cost of compliance activities
- Resistance from staff to extra procedures
- Risk of compliance becoming a formality
- Balancing compliance with agility

# Ensuring Effective Compliance

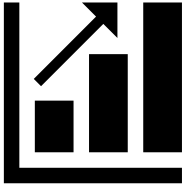
- Clear policies and training programs
- Use of automated tools for tracking
- Regular internal audits and reviews
- Leadership commitment and support
- Culture of responsibility and integrity

# Summary

- Organizational context shapes SCM effectiveness
- Constraints define realistic SCM practices
- High-level planning provides direction and alignment
- Governance ensures accountability and proper oversight
- Compliance maintains quality, safety, and trust

# References

1. Leon, A. (2015). Software Configuration Management Handbook (3rd ed.). Norwood: Artechhouse. Retrieved September 4, 2025.
2. OpenAI. (2025, September 4). SCM history and concepts [AI-generated image]. ChatGPT (Sora). <https://chat.openai.com/>
3. OpenAI. (2025, October 1). SCM and organizational Context [AI-generated image]. ChatGPT (Sora). <https://chat.openai.com/>



# Thank You!

## SOFTWARE CONFIGURATION MANAGEMENT



N  
E  
X  
T



L  
E  
C  
T  
U  
R  
E

**SCM Plan and  
Tools**